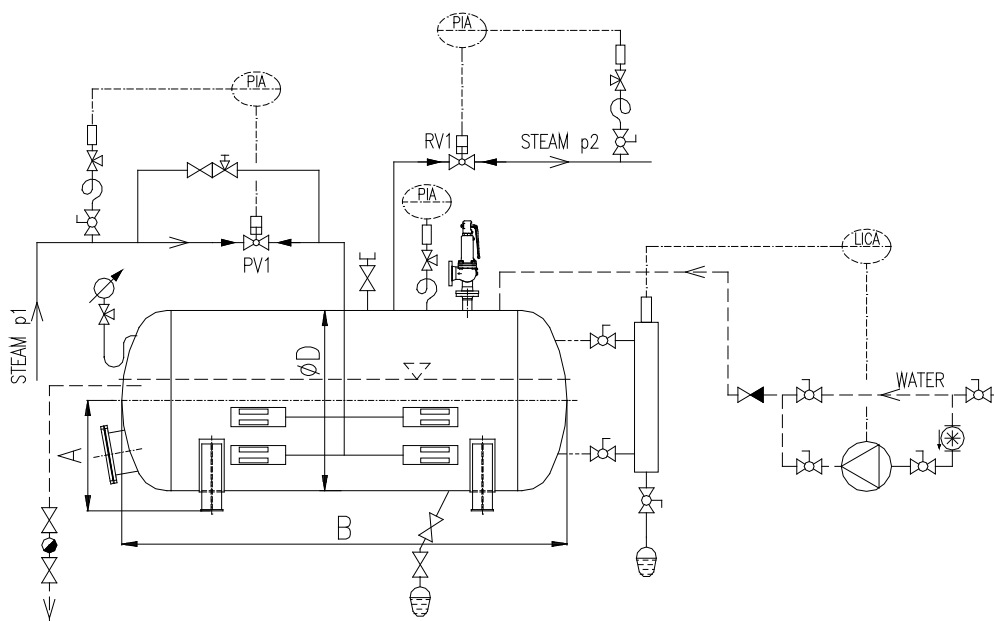


KL 10

## STEAM ACCUMULATOR

### type SAP

### pressure series PN6, PN10, PN16, PN25



Model range	Tank Capacity (m <sup>3</sup> )	A (mm)	B (m)	∅D (mm)
80	1 – 5	800	1,6 – 6,6	1000
100	2 – 8	1000	1,9 – 7,7	1200
120	4 – 14	1200	2,4 – 9,8	1400
140	6 – 35	1400	2,5 – 12	1600

Steam accumulators are used for a steam accumulation and for coverage of sudden steam bleedings.

Accumulator is heated by a steam with a pressure p1, transfer valve PV1 via bubbler jets. Steam bleeding is performed at a decreased steam pressure p2 via reducing valve RV 1. The water level is maintained by a pump or water is discharged via a condensate extract. The accumulator is further equipped with a safety valve, vacuum breaker, discharge, level gauge and other necessary valves and fittings by Spirax Sarco.

Material of accumulators: see catalogue p. 7.

Dimensions, number and location of connections on the steam accumulator are decided upon according to specific requirements.

Other dimensions of steam accumulator upon request.

Schema and dimensions listed in the table are informative are determined according specific requirements.

SEA CZ, a.s. zapsána v OR u Krajského obchodního soudu v Brně, oddíl B, vložka 3214

Výpusta 400, 760 01 Zlín

tel. 577 220 351-4

fax 577 220 357

e-mail: seacz-zl@seacz.cz

KB Zlín, č.ú. 27-1922340217/0100

IČO 25588664

www.seacz.cz

DIČ 303-25588664

Tyršova 469, 280 00 Kolín 2

tel. 321 729 249

fax 321 722 809

e-mail: seacz-kol@seacz.cz

KB Kolín, č.ú. 27-4397410267/0100