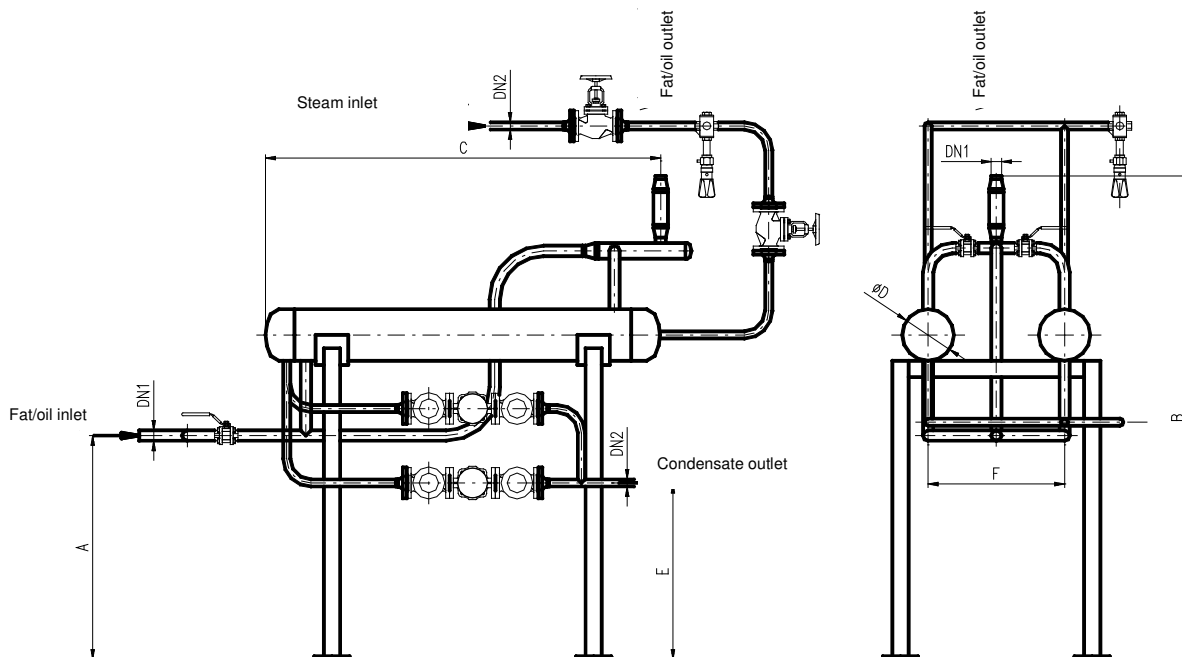




KL 16

**OIL HEATERS**  
**type SOTO**  
pressure series PN 6, 16, 40



Model range	ØD (mm)	A (mm)	B (m)	C (mm)	E (mm)	F (mm)	DN1	DN2	Heating surface (m <sup>2</sup> )
2	159	690	1490	1200	500	420	1"	15	2
4	273	690	1490	1300	500	500	5/4"	25	4
8	324	800	1490	1500	500	600	6/4"	32	8
16	324	1500	1490	2000	500	600	2"	40	16

Material: steel - class 11,12,15,17 (another material upon customer's request)  
Oil heaters can be used for a preheating of fuel oil (light heating oil, heavy oil) or for a preheating of animal fat prior to the combustion unit. The heater system is dual, one heater is 100% reserve. It is equipped with a direct heating with a control of outlet oil temperature - type Spirax Sarco. As for the media, SOTO is fully equipped with valves and fittings and fine accessories. SOTO is fully assembled and insulated including the supporting frame. Heaters can be located one next to another or one above another. The heating surface and entire dimensions can be adjusted based on customer's requirements and specific application.

Dimensions listed in the table are informative and are decided upon according to specific requirements.