

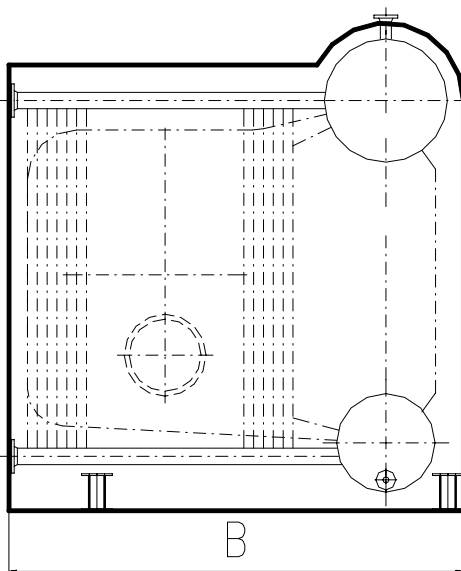
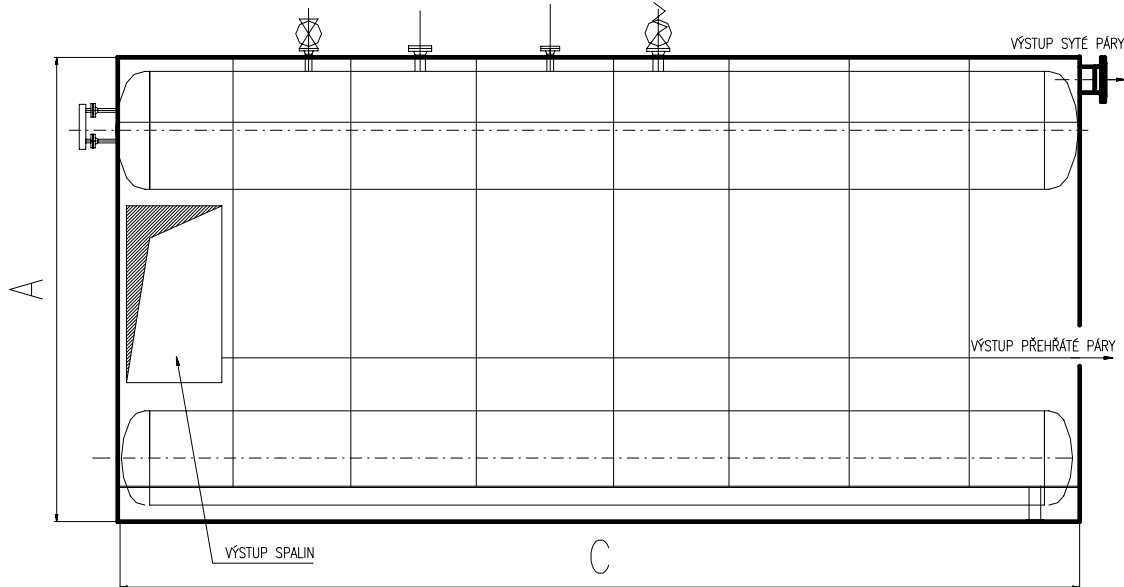
KL 36

SEA CZ, a.s.
 Servisní energetická agentura

**Dodávky
 a servis
 kotelen**



MEDIUM-PRESSURE STEAM BOILERS
 type SKP



The boilers are delivered in a design for a saturater and an overheated steam or alternatively as a hot-water steam.

The boilers are designed as a fire-tube two-drums with gas proof combustion chamber, and with one cauldron bundle between both drums. The boiler is designed as an excess pressure.

The boilers are completely fitted up and delivered inclusive of a needful fittings.

Text continues on the following page.
 Schema is just informative.

SEA CZ, a.s. is register in trade register at a regional court in Brno, division B, rider 3214

Výpusta 400, 760 01, Zlín
 tel: 577 220 351-4
 fax 577 220 357
 e-mail: seacz-zl@seacz.cz
 KB Zlín, č.ú. 27-1922340217/0100

Alej Svobody 56, 323 18, Plzeň
 tel: 377 532 831
 fax 377 532 831
 e-mail: seacz-pl@seacz.cz

Tyršova 469, 280 00, Kolín 2

IČO 25588664

www.seacz.cz

DIČ CZ25588664

Basic parameters of boilers:

| Boiler Type | Steam output (kilo/hour) | Boiler output (kW) | A (mm) | B (mm) | C (mm) |
|-------------|--------------------------|--------------------|--------|--------|--------|
| 12 | 12000 | 8100 | 4000 | 3200 | 4800 |
| 16 | 16000 | 10800 | 4000 | 3200 | 5600 |
| 20 | 20000 | 13500 | 4000 | 3700 | 6200 |
| 25 | 25000 | 16900 | 4000 | 3700 | 6500 |
| 30 | 30000 | 20300 | 4000 | 4000 | 7500 |

Nominal steam pressure up to 2,5 MPa, nominal temperature of superheated steam up to 300°C

Other boilers outputs upon request.

Other parameters of steam pressure and temperature upon request.

We equip boilers with an unmanned operation system (Catalogue p. 27, 28), new and overhauled burners (Catalogue p.26), instrumentation and systems (Catalogue p.29), economisers (Catalogue p.2, 3), etc.